



Catholic Schools
Parramatta Diocese

CSPD Safeguarding Strategy 2025



CSPD's 6 Strategic Pillars



MISSION
Catholic by nature,
not by name only

Develop faith filled, service-minded students in all cohorts, through an understanding of Catholic social teaching and encouraged by Catholic values to become active contributors to their community



PEOPLE
High performance
culture

Encourage our people to deliver their best, by defining clear goals and targets, and offering active professional development opportunities and access to a supporting system



QUALITY
Strong academic
achievement

Deliver relative learning gains maximising each student's potential, with evidence-based teaching practices, fit-for-purpose learning environment, early identification / intervention and targeted student support catering to all learning needs



RELEVANCE
Breadth of
opportunity

Encourage students to pursue their passions and choose the path aligned to their specific needs through diverse subject offerings, co-curriculars, and progression opportunities, both in higher ed. and alternative pathways



SUSTAINABILITY
Financial
stewardship

Establish scalable, unified and optimised systems, practices and processes that enable sustainable growth, effective and equitable resource distribution / contributions in our communities, maximising opportunities for staff and students



TRUST
Integrity,
accountability and
transparency

Promote integrity within our organisation, by putting the optimal systems and controls in place to effectively manage our people and financial resources



A Message from the Chief Executive Officer

At Catholic Schools Parramatta Diocese (CSPD), we are deeply committed to the safety and wellbeing of the children entrusted to our care. Every child has the right to be heard, treated fairly, and feel safe at all times. We have a responsibility to ensure that our schools are environments in which all students feel secure, valued, and empowered to flourish.

Guided by the NSW Child Safe Standards, we proactively prevent, identify, and address harm while continuously enhancing our safeguarding strategies to maintain robust child protection measures across our schools and facilities. This enables us to uphold a stringent zero-tolerance policy towards all forms of abuse, thereby fostering a culture of respect and safety.

A strong child safety culture is a collective responsibility for everyone at CSPD. Each member of our organisation plays an essential role in ensuring child safe practices and addressing concerns in an appropriate and timely manner. We always aim to honour each child's rights while, at the same time, fostering a supportive and inclusive environment. Our dedicated staff receive clear guidance, ongoing professional development, and resources to uphold the highest standards of child protection.

Through nurturing safe, welcoming and supportive environments that reflect our Catholic values of compassion, respect and care, we empower every child to realise their full potential with confidence and security. Our commitment to safeguarding is another way we live our Vision of Enriching the lives of our students through education grounded in excellence, inclusivity and Catholic tradition.



Jack de Groot
Chief Executive Officer

CSPD Commitment Statement

We are committed to providing child safe communities that recognise and uphold the dignity and rights of all children and young people.

To achieve this, we:

- encourage open communication so families and communities are informed of relevant issues and participate in decisions about the safety of children and young people
- empower children and young people to have a say and be heard
- establish safe and supportive relationships with all children and young people and uphold their dignity
- document policies and procedures to prevent risks to children and young people and build a strong culture of safeguarding. Every person within CSPD who comes into contact or works with children will be expected to follow these policies and procedures and contribute to the culture of care and protection of all children and young people.
- provide induction and ongoing professional development relevant to the care and protection of children and young people and monitor staff participation in this professional learning

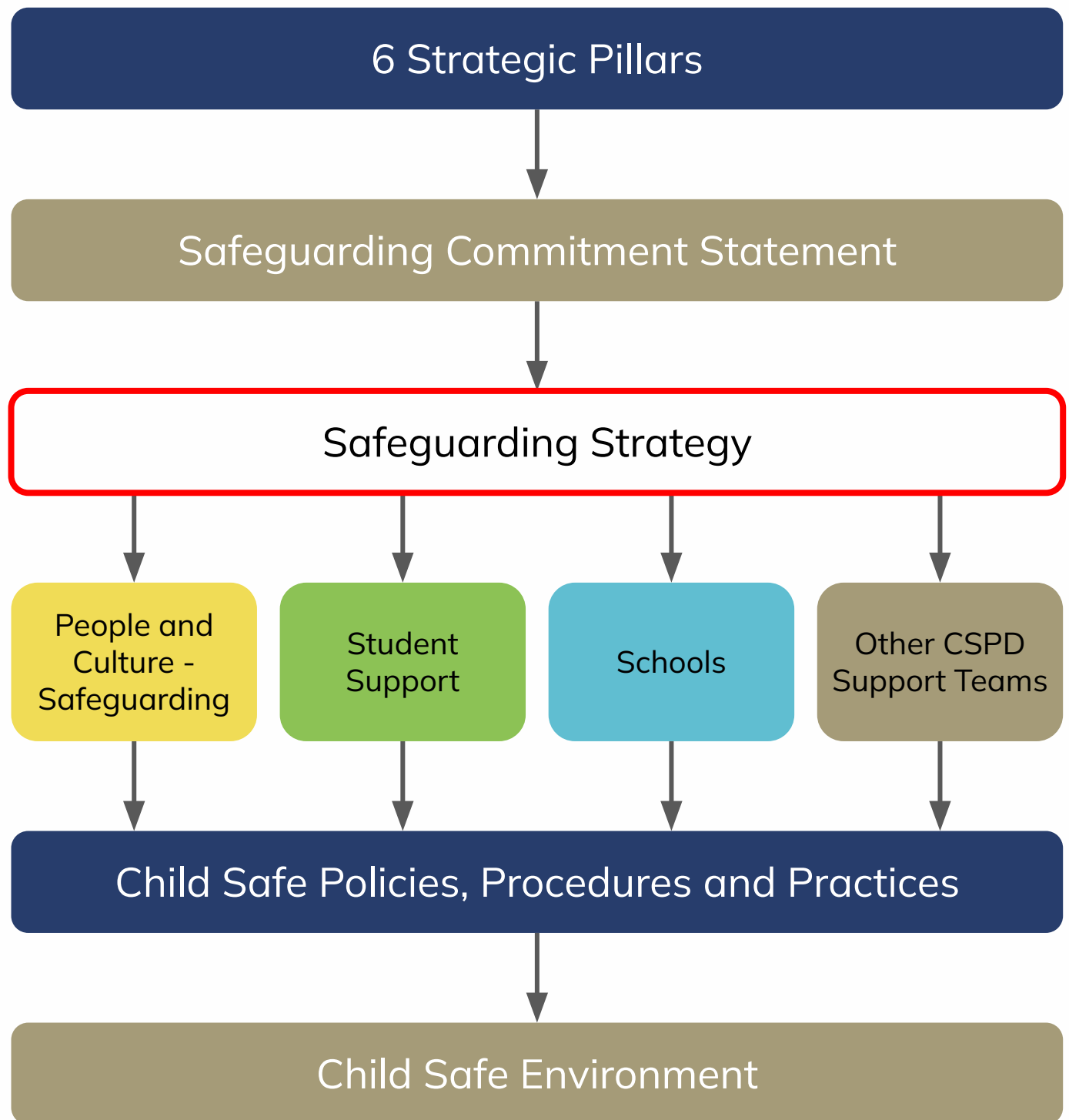


CSPD Commitment Statement

- promote the safety of children and young people with a disability and from culturally and/or linguistically diverse backgrounds
- plan, organise and review all activities with children and young people, proactively considering potential risks so that such risks may be reduced or eliminated
- take a zero tolerance approach to child abuse
- treat all allegations and safety concerns seriously, confidentially and consistently, and respond according to our policies and procedures
- exercise our legal and moral obligations to contact authorities when we are concerned about a child or young person's safety
- ensure recruitment practices for staff and volunteers are in line with safeguarding requirements
- regularly review our safeguarding policies and practices to ensure that they always support a culture and practice that puts the safety and wellbeing of children and young people at the centre of our thinking, values and actions.



Child Safe Landscape



The NSW Child Safe Standards

The Royal Commission into Institutional Responses to Child Sexual Abuse recommended 10 Child Safe Standards, drawing on its findings, research and consultation about what makes organisations child safe.

The Child Safe Standards provide a benchmark against which organisations can assess their child safe capacity and set performance targets. The Standards provide tangible guidance for organisations to drive a child safe culture, adopt strategies and act to put the interests of children first, to keep them safe from harm.

The 10 Child Safe Standards are:

Standard 1

Child safety is embedded in organisational leadership, governance and culture

Standard 2

Children participate in decisions affecting them and are taken seriously

Standard 3

Families and communities are informed and involved

Standard 4

Equity is upheld and diverse needs are taken into account

Standard 5

People working with children are suitable and supported

Standard 6

Processes to respond to complaints of child abuse (or other concerns) are child focused

Standard 7

Staff are equipped with the knowledge, skills and awareness to keep children safe through continual education and training

Standard 8

Physical and online environments minimise the opportunity for abuse (or other kinds of harm) to occur

Standard 9

Implementation of the Child Safe Standards is continuously reviewed and improved

Standard 10

Policies and procedures document how the organisation is child safe

The Safeguarding Standards

In October 2021, the NSW Government passed legislation to embed the 10 Child Safe Standards into the Children's Guardian Act 2019. The passing of this legislation, recommended by the Royal Commission into Institutional Responses to Child Sexual Abuse, will create safer environments and organisations for the children and young people of NSW.

The 10 Child Safe Standards provide a framework for child-related organisations to create and maintain child safe cultures, operations and environments.

The National Catholic Safeguarding Standards, developed from the 10 Child Safe Standards, provide a framework for Catholic Church entities working with children to create, maintain and improve their child safe practices.

CSPD is fully committed to meeting both the NSW Child Safe Standards and the National Catholic Safeguarding Standards as part of our system-wide approach to ensuring the safety and wellbeing of all children and young people in our care.



Key Child Safe Policies and Procedures

People & Culture Directorate

- Code of Conduct Policy
- Code of Conduct When Working with Children and Students Policy (Safeguarding)
- Working with Children Check Policy (Safeguarding)
- Safeguarding Procedures (Safeguarding)
- Recruitment Selection Policy
- Recruitment Procedures

Student Support Directorate

- Student Wellbeing Policy
- Student Behaviour Policy
- Preventing Discrimination, Bullying & Harassment
- Bullying of Students - Prevention and Response Procedure
- Police or DCJ Interviews in Schools Policy

Legal, Governance & Risk Directorate

- Complaint Management Procedures (for Parents, Carers and Community Members)
- Information Sharing Policy
- Records Retention and Disposal Policy
- Student Use of Digital Devices and Online Services Policy

Information Technology Directorate

- Staff Acceptable Use of ICT and Social Media Policy

Finance & Infrastructure Directorate

- Safeguarding (Facilities) Procedures

* Please note that this is not a comprehensive list of all relevant policies and procedures. Further details can be accessed at <https://www.parra.catholic.edu.au/about/policy-central>

Our Safeguarding Strategy is underpinned
by three key areas:

Culture, Community and Capacity

Culture

**Standards
1, 5, 6 and 10**

- Policies and Procedures
- Safeguarding Commitment Statement
- Reporting
- Recording
- Communication Resources Provided to Schools
- Communication Resources Available to Community
- Risk Management
- Recruitment
- Complaints Handling
- Curriculum

Community

**Standards
2, 3 and 4**

- Student Voice
- Parent/Carer Voice
- Building Child Safe Communities
- Diversity

Capacity

**Standards
7, 8 and 9**

- Training and Professional Development
- eSafety
- Continuous Improvement
- Safe Space Design

Culture

CSPD will create a safe culture that empowers children and young people through effective governance and leadership.

Standards 1, 5, 6 and 10

Policies and Procedures

Policies and procedures developed and implemented play a vital role in establishing a safe culture that empowers our students, ensuring their voices are heard and their wellbeing is prioritised. Through effective governance and leadership, these frameworks guide consistent, transparent practices that reflect a genuine commitment to child safety.

Our Policies and Procedures can be accessed via the CSPD website.

Safeguarding Commitment Statement

Our Safeguarding Commitment Statement demonstrates a dedication to creating a safe, inclusive, and empowering environment for our students. It reflects strong leadership and governance by embedding child safety into our culture, values, and everyday practice. The strategy outlines our approach to preventing harm, promoting equity, and responding effectively to concerns, ensuring that all children feel respected, valued, and heard. It supports the recruitment, training, and supervision of staff to uphold child safe practices and reinforces clear policies and procedures that guide consistent, transparent actions.

By making this commitment public and actionable, we aim to build trust with children, families, staff, and the community, contributing to a protective culture where the rights, safety, and wellbeing of children and young people are at the centre of all decisions.



Culture

CSPD will create a safe culture that empowers children and young people through effective governance and leadership.

Standards 1, 5, 6 and 10

Reporting

Our reporting procedures ensure that all staff, volunteers, children, and families understand how to raise concerns about child safety or wellbeing, fostering a culture of transparency and responsiveness. Reporting tools allow for individuals to report concerns quickly and confidently.

Regular audit processes help us review and evaluate our safeguarding practices, ensuring compliance with policies and identifying areas for improvement. Risk registers allow our organisation to systematically identify, assess, and monitor risks to children, helping to proactively manage and reduce harm. Safeguarding risks are regularly reported to the CEO, Executive Leadership Team and the CSPDL Board when required.

We also work closely with key agencies, including the Office of the Children's Guardian, NSW Police, the Joint Child Protection Response Program, and the Department of Communities and Justice, to meet all legal reporting requirements.

Safeguarding concerns are reported in accordance with the CSPD Safeguarding Procedures.



Culture

CSPD will create a safe culture that empowers children and young people through effective governance and leadership.

Standards 1, 5, 6 and 10

Recording

We are committed to ensuring the confidentiality and secure storage of all safeguarding information. Our systems and records management procedures support timely and accountable responses helping us to maintain a safe and supportive environment for every child and young person in our care.



Culture

CSPD will create a safe culture that empowers children and young people through effective governance and leadership.

Standards 1, 5, 6 and 10

Communication Resources Provided to Schools

CSPD Support Teams support schools by providing valuable resources designed to assist in the development and maintenance of a child safe culture. These include periodic updates and materials for key events. Resources are made accessible via internal platforms and channels. Additionally, the RoSH (Risk of Significant Harm) Online and Safeguarding intranet pages provide important information to schools.

Communication Resources Available to Parents, Carers and the General Public

We are committed to keeping parents, carers, and the general public informed and engaged in promoting child safety. A range of communication resources is readily available to ensure transparency and support community awareness.



Culture

CSPD will create a safe culture that empowers children and young people through effective governance and leadership.

Standards 1, 5, 6 and 10



Risk Management

We adopt a proactive and systematic approach to child safeguarding, guided by a comprehensive Risk Management Plan reviewed quarterly. Individualised plans are developed when needed in consultation with relevant stakeholders to address specific needs and situations. Safeguarding is embedded in everyday planning, ensuring child safety remains a central focus of all operations.

Strong governance focus on child safety, with safeguarding a standard agenda item on Audit and Risk Committee, CSPD leadership and Board meeting agendas.

In response to feedback from external bodies such as the Office of the Children's Guardian, we review and adapt its practices to ensure continuous improvement in maintaining a safe and supportive environment for children and young people.

Recruitment

We place child safety at the centre of our recruitment process. All staff must hold a verified and current Working with Children Check (WWCC), and job advertisements include a Safeguarding Statement. The selection process incorporates child protection-focused questions and standardised referee checks to assess candidates' suitability for working with children. These measures help create a safe and trusted environment for children and young people.

Culture

CSPD will create a safe culture that empowers children and young people through effective governance and leadership.

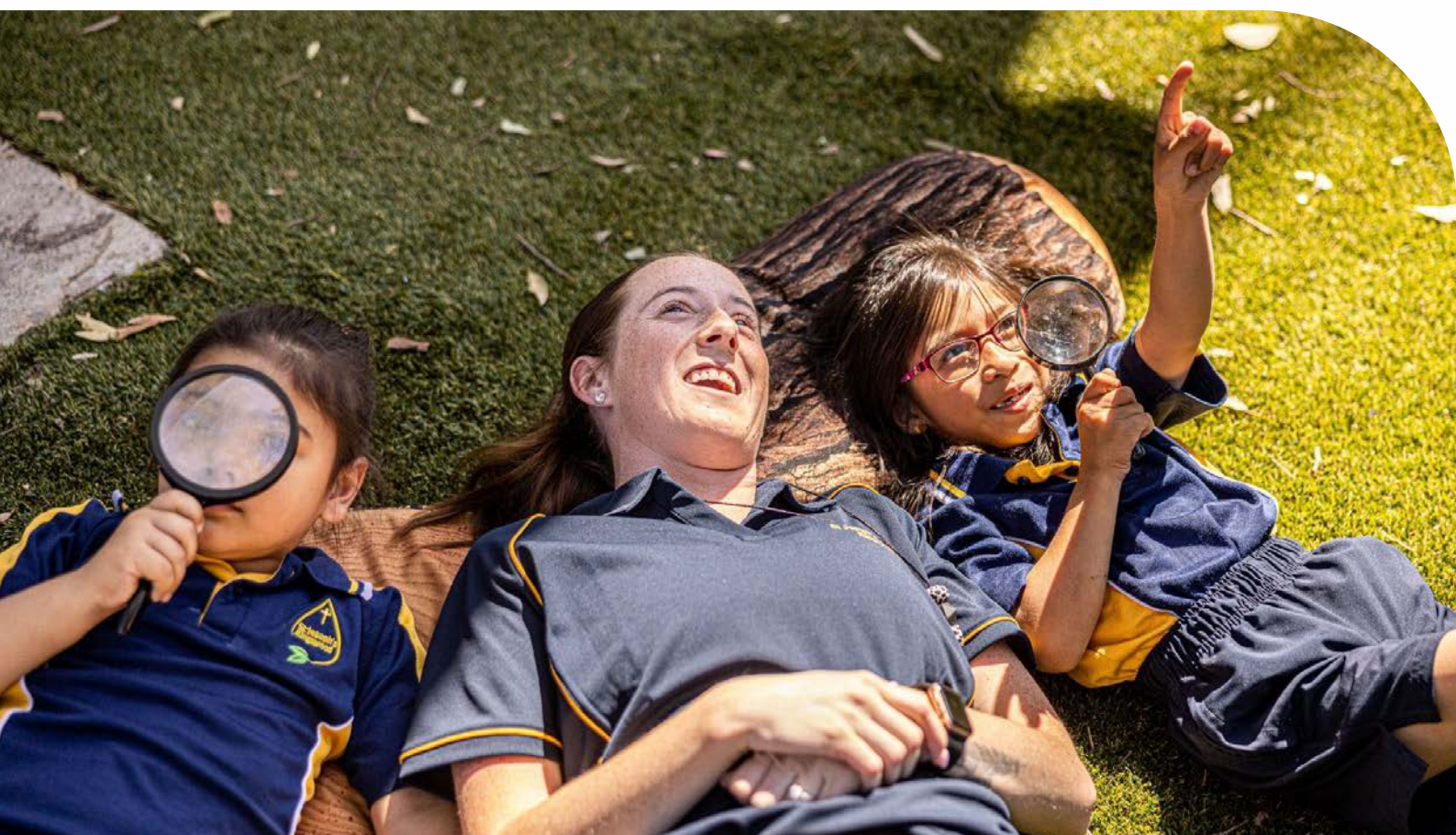
Standards 1, 5, 6 and 10

Complaints Handling

We are committed to providing a clear and supportive process for handling child safety and wellbeing complaints. All reports related to child safety, whether involving staff behaviour, the environment, or other safeguarding issues, are taken seriously and addressed promptly, fairly, and transparently. Complaints are treated with respect and confidentiality, and thorough investigations are conducted. Regular reviews help us maintain high standards and improve practices that protect children and young people.

Curriculum

We ensure child safety is actively implemented across all schools through curriculum and support structures, such as the PDHPE K–10 Syllabus, which equips students with the knowledge and skills to stay safe, advocate for their rights, maintain their wellbeing, and build respectful relationships. Our Multi-Tiered System of Supports (MTSS), Strive Thrive Learn, is in place in every school, providing universal, targeted, and intensive support based on individual student needs. These measures reflect CSPD's commitment to embedding child safety in teaching and student support practices.



Community

CSPD will foster a safe, informed, and inclusive community where children actively participate, partnering with families and communities to promote equity and respect for diversity.

Standards 2, 3 and 4

Student Voice

We believe that students should be allowed to share their thoughts, experiences, and ideas, as it helps create safer and more supportive learning environments. Student voice is encouraged through leadership opportunities, wellbeing programs, and regular check-ins that allow students to speak openly and feel heard. Our schools provide safe spaces where students can ask for help, learn about their rights, and build positive relationships. With access to trained counsellors, specialist staff, and inclusive learning programs, every student is supported in a way that respects their individual needs and backgrounds. By listening to students and involving them in decisions that affect their school life, we foster a culture of trust, inclusion, and safety across our communities.

Parent/Carer Voice

Parents and carers are a vital part of our school communities, and their insights and involvement play a key role in supporting the safety and wellbeing of all students. We actively seek and value family input through surveys, school-based parent groups, and the Parramatta Parent Representative Council (PRC). Our dedicated Family Engagement Officer helps strengthen communication and collaboration between home and school, ensuring families feel connected and empowered. We also provide resources such as e-safety webinars and clear guidance on staff responsibilities to help parents and carers stay informed. By working in partnership with families, we build trust, encourage early support, and create safer, more inclusive environments.



Community

CSPD will foster a safe, informed, and inclusive community where children actively participate, partnering with families and communities to promote equity and respect for diversity.

Standards 2, 3 and 4

Building Child Safe Communities

Building Child Safe Communities is our commitment to ensuring every adult who works or volunteers in our schools understands their role in creating a safe and supportive environment for children and young people. All volunteers and contractors in the Diocese must complete a learning module on safeguarding practices before they begin their role. This helps to ensure that everyone is aware of the expected standards of behaviour and their responsibility to speak up if they have any concerns. To support this initiative, we provide easy-to-access resources, including videos, fact sheets, and guidance through our internal and external platforms. By setting clear expectations and offering ongoing support, we work together to build safer school communities where children are protected, respected, and valued.

Diversity

We recognise that every student is unique, with individual learning needs, abilities, and backgrounds. We are committed to fostering environments that value and support the full diversity of our student population.

Through frameworks such as Strive Thrive Learn, our Multi-Tiered System of Supports (MTSS) and the work of Inclusive Learning Teams, our schools provide responsive and flexible support to meet individual student needs. The Behaviour and Specialist Programs Team and High Support Needs units play a vital role in ensuring that students requiring more intensive support are included, valued, and set up for success.

Our commitment to diversity is reflected in how we plan, teach, and support every child to thrive as part of a safe and inclusive school community.



Capacity

CSPD will ensure ongoing education, maintain safe physical and online environments, and drive continuous improvement in all areas.

Standards 7, 8 and 9

Training and Professional Development

We ensure that all staff, volunteers, and contractors are fully equipped to create and maintain safe, supportive environments for children and young people. Every employee participates in mandatory annual Safeguarding and Risk of Significant Harm (RoSH) training, with targeted training for leadership and wellbeing staff. New staff undergo a local induction process that familiarises them with specific safety practices and expectations within their school community. We provide ongoing professional development to build cultural competency, privacy awareness, and the ability to handle concerns or complaints appropriately. Regularly reviewing our policies and practices ensures that we stay ahead of emerging risks and continuously improve our approach to child safety, fostering a culture where every child can learn in a safe and nurturing environment.

eSafety

Prioritising the safety of students, both in the classroom and online, is important at CSPD. In partnership with the eSafety Commissioner, we have developed and delivered a series of eSafety webinars for school leadership, staff, and parents/carers across the Diocese. These resources aim to raise awareness of online safety, helping to protect children and young people from digital risks. Additionally, our Safeguarding team works closely with the Student Support, Learning Outcomes, and Information Technology Directorates to create tools and resources that support schools in teaching students how to navigate the digital world safely.



Capacity

CSPD will ensure ongoing education, maintain safe physical and online environments, and drive continuous improvement in all areas.

Standards 7, 8 and 9

Continuous Improvement

We are committed to the ongoing improvement of practices that support child safety and wellbeing. We continually reflect on and strengthen our implementation of the NSW Child Safe Standards, using feedback, data, and evidence to guide our progress.

Through regular reviews, staff training, and updated policies, we ensure our approach remains current, effective, and responsive to the evolving needs of children and young people. This culture of continuous improvement helps us create safer, more supportive environments where every student feels protected, valued, and empowered to thrive.

Safe Space Design

We are committed to creating school environments that prioritise child safety and wellbeing. Our new and existing school buildings are designed with safeguarding principles in mind, with consultation from experts to ensure the physical space supports security and emotional safety. Regular risk assessments identify potential hazards, and safety protocols are in place to address any concerns promptly.

Statutory and safety management programs assist in ensuring that school facilities remain safe and secure for the wellbeing and protection of students.

Through the Annual School Declaration, we ensure that all staff are informed annually about the mandatory reporting process and procedures for responding to reportable matters, helping to provide secure learning environments.

Physical environments are designed so that they are inclusive and accessible, ensuring students with diverse physical needs can participate fully and safely.



What Roles Do We All Play?

Safeguarding is everyone's responsibility

All children have the right to be safe at all times. Every individual engaged by CSPD has a responsibility to do their part in keeping children safe. Every CSPD Support Team and school needs to take deliberate actions to protect children from physical, sexual, emotional, and psychological abuse. The responsibility for taking action to prevent child abuse and to raise concerns must be understood and accepted by everyone.

The following pages provide brief snapshots of how each area of CSPD supports student safety and links with the NSW Child Safe Standards.

Chief Executive Officer (CEO)

The CEO demonstrates a strong commitment to child safety by leading with integrity and embedding the Child Safe Standards into all levels of the organisation. This includes creating a child-focused culture (Standard 1), where the safety and wellbeing of children are at the forefront of decision-making. The CEO ensures that clear policies and procedures (Standard 10) are in place to guide staff and leaders in their responsibilities, prioritises ongoing staff training (Standard 7) to understand and meet child safety requirements, and fosters a culture of continuous improvement (Standard 9) to maintain and enhance safety practices across the organisation.

Schools

Schools play a critical role in ensuring the safety and wellbeing of students, as they are the primary point of contact for students on a day-to-day basis. By following system-wide child safety policies (Standard 10), schools create safe, supportive, and secure environments for students. This includes adhering to established guidelines, ensuring staff receive regular training (Standard 7), and taking proactive measures to identify and address potential risks to child safety. Schools work closely with CSPD Support Teams to maintain a coordinated approach to child safety, while engaging with students (Standard 2), families, and the wider community (Standard 3) to ensure each child's protection and support in their physical, emotional, and social wellbeing.

What Roles Do We All Play?

People & Culture

Our Safeguarding team, part of the People & Culture Directorate, plays a vital role in ensuring the safety of students.

The team is responsible for managing child and student-related allegations and investigations against CSPD staff, in accordance with the CSPD Safeguarding Procedures (Standard 6). It oversees the implementation of the National Catholic Safeguarding Standards and the NSW Child Safe Standards, manages historical abuse matters (Standard 6), and delivers Reportable Conduct training for CSPD staff (Standard 7). Additionally, the team ensures compliance with Working with Children Checks (WWCCs), as outlined in the CSPD WWCC Policy (Standard 5), and provides child safe induction and training for volunteers and contractors through the Building Child Safe Communities (BCSC) process (Standard 5). It also offers advice to schools on safeguarding matters. The team's work is supported by key CSPD policies and procedures, including the Safeguarding Procedures, the Code of Conduct when Working with Children and Students, and the Working with Children Check Policy (Standard 10).

More broadly, the People & Culture Directorate supports student safety by ensuring robust recruitment procedures (Standard 5), including thorough reference checks to help safeguard against potential risks and continuous compliance monitoring. The Directorate leads the development, implementation, and ongoing review of safety management systems (Standard 8). Additionally, People & Culture assists schools in meeting legislative and regulatory requirements (Standard 1) and promotes best practice measures to minimise health and safety risks (Standard 8), creating safer workplaces and learning environments for all.



What Roles Do We All Play?



Student Support

The Student Support Directorate assists students, families and schools by offering expert guidance on a range of interventions aimed at fostering students' wellbeing, safety and enhancing their learning outcomes (Standard 1). This support encompasses universal strategies for student wellbeing, targeted interventions for specific needs, and intensive support services when necessary.

This assistance is delivered through three core service arms:

Wellbeing Delivery: This service focuses on providing consultation and advice to schools regarding effective implementation and continuous refinement of Strive, Thrive, Learn, our Multi-Tiered System of Supports (MTSS). The aim is to ensure that schools are equipped with effective strategies for supporting student wellbeing and learning at all levels (Standard 7).

Student Engagement: The Student Engagement team offers support to both students and schools by utilising the MTSS framework to ensure timely and appropriate interventions. The team comprises specialists who address behavioural and attendance concerns, ensuring that students receive the necessary support to remain engaged in their education (Standard 2).

Student Wellbeing and Counselling: This service provides each school with access to trained counsellors, who are social workers or psychologists, and are supported with ongoing professional development and supervision. Additionally, the team provides oversight and consultation on child protection matters, as well as critical incident support to ensure that schools are equipped to respond effectively to sensitive situations (Standard 4).

What Roles Do We All Play?

Mission

The Mission Directorate is responsible for supporting schools in maintaining and enhancing their Catholic identity and mission. This is particularly through the resourcing of schools to deliver high quality prayer, formation and religious education opportunities for their communities. In providing this support, the Mission directorate is attentive to child safety policies and procedures (Standard 10) upholding safe environments (Standard 8) and fostering engagement with families (Standard 3).

Communications & Engagement

The Communications & Engagement Directorate plays an important role in supporting student safety by managing clear, timely, and sensitive communication with parents and carers, staff, the community, media, and other stakeholders (Standard 3). Through the work of the Family Engagement Officer, the Directorate strengthens connections with families, carers, and the broader community, fostering consultation, collaboration, and participation (Standard 3) to promote the rights, safety, and wellbeing of children. By ensuring that information is shared transparently, the Directorate helps build a culture of trust and transparency that supports a safe environment for students.

Finance & Infrastructure

The Finance & Infrastructure Directorate plays a key role in supporting student safety by overseeing the design, development, and maintenance of CSPD's physical environments. Through careful planning and delivery of all infrastructure and works programs (Standard 8), the Directorate ensures that school facilities are safe, secure, and designed to promote the wellbeing and protection of all students. By embedding child safe principles into the built environment, the Directorate helps create spaces where children can learn and thrive safely, promoting physical safety (Standard 8).



What Roles Do We All Play?

Legal, Governance & Risk

The Legal, Governance & Risk Directorate plays an essential role in promoting student safety by supporting the Executive Leadership Team with expert advice on risk management (Standard 9), stakeholder engagement, information sharing, and privacy. The Directorate leads the development of policies and procedures (Standard 10) that embed child safe principles into everyday practice. It also ensures that CSPD remains compliant with legal and regulatory obligations (Standard 1) while overseeing assurance processes to identify and mitigate risks. Through this work, the Directorate upholds and continuously strengthens CSPD's commitment to creating safe environments for all students (Standard 8).

Information Technology

The Information Technology Directorate plays a critical role in student safety by providing secure and reliable ICT services that support safe digital environments across CSPD schools and directorates. The team ensures that child-related information is protected through strong data governance (Standard 8), robust cybersecurity measures, and responsible information management. By maintaining safe digital infrastructure and promoting best practices in online safety (Standard 8), the Information Technology Directorate helps safeguard students in an increasingly connected learning environment.

Quality & Performance

The Quality & Performance Directorate supports student safety by ensuring that child safety principles are embedded in the systems used to measure and monitor school effectiveness. Through School Improvement Plans (Standard 1), the Directorate helps identify areas of strength and areas for improvement related to student wellbeing and safety. By promoting accountability (Standard 7) and continuous improvement (Standard 9), the Directorate ensures that child safety remains a key focus across all schools and that practices are consistently aligned with the highest standards of care and protection.

What Roles Do We All Play?

Learning Outcomes

The Learning Outcomes Directorate plays a vital role in student safety by embedding child safe principles into curriculum design, teaching practices, and learning environments (Standard 1). By ensuring that educational programs promote student wellbeing, respectful relationships, and safe behaviours (Standard 4), the Directorate supports schools in creating protective and inclusive spaces (Standard 8) for all students. Additionally, the Directorate collaborates with school leaders and staff to integrate child safety into professional learning and continuous improvement processes (Standard 9), reinforcing a system-wide commitment to keeping students safe.





**Catholic Schools Parramatta
Diocese**

Bethany Centre, 470 Church Street,
Parramatta NSW 2150
Locked Bag 4, North Parramatta NSW 1750
+61 2 9840 5600 parra.catholic.edu.au